

Pre-program

NUS Business School
Executive Education

A photograph of the NUS Business School building, a modern glass-fronted structure with a curved facade. In the foreground, there is a tall, orange and blue sign. The orange part of the sign features the NUS crest and the text "NUS National University of Singapore". The blue part of the sign has the text "National University of Singapore" written vertically. The background shows a clear blue sky with some clouds and green trees.

WIF-NUS Placing a Bet on the Future: Exploring Exponential Technologies Program

Confidential Information

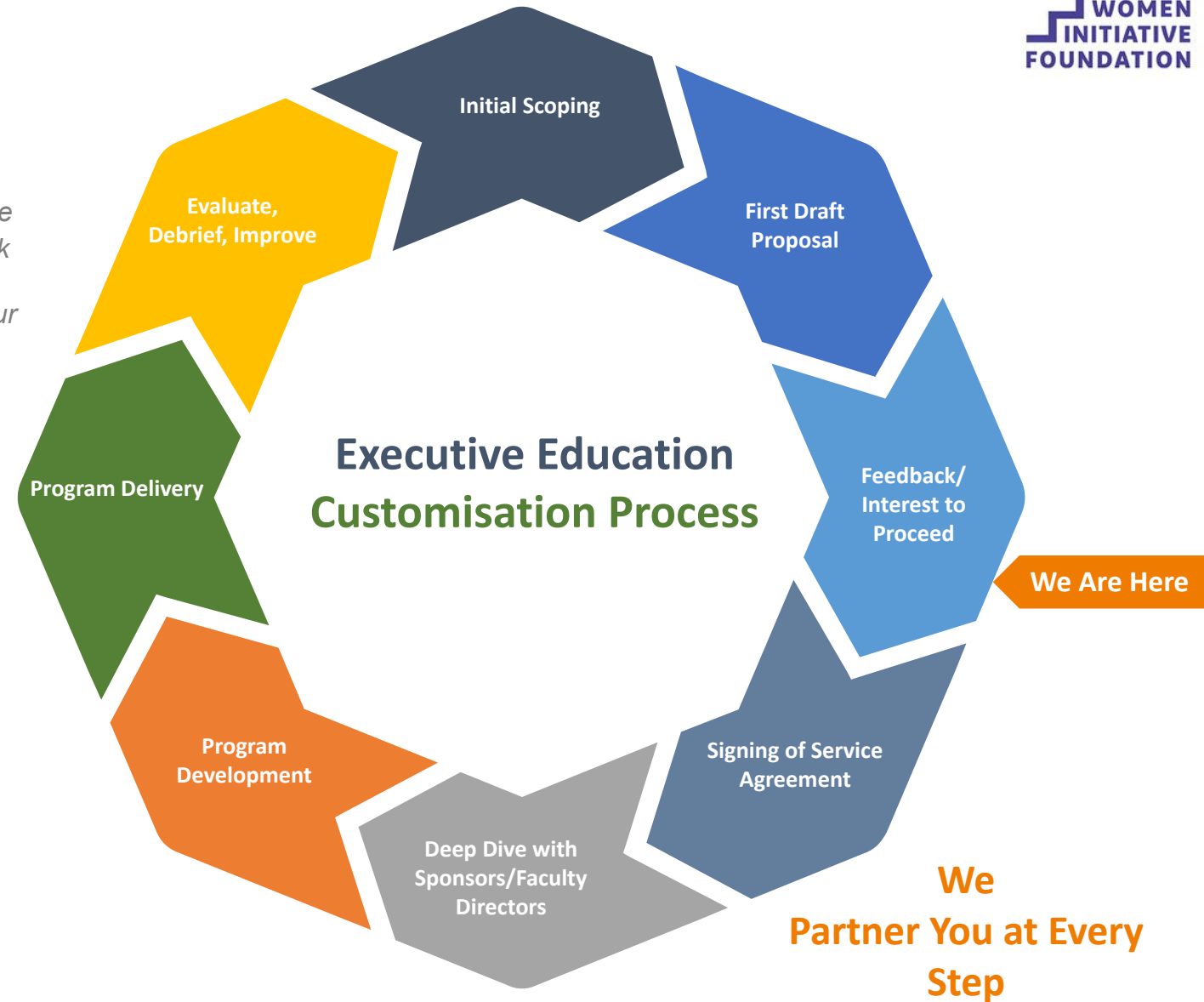
Save as otherwise permitted under this proposal, both parties agree not to disclose the terms of this proposal and all Confidential Information of the other party and protect the same from improper use or disclosure, using at least the same level of protection it uses to safeguard its own confidential information. Both parties shall not, without the other party's prior written consent, use the Confidential Information for any purpose other than as required in the performance of its obligations under this proposal, nor disclose the Confidential Information to any person save those of its employees or representatives who have a need to know the same for purposes of this proposal, provided such employees and representatives are informed of and agree to be subject to the same confidentiality obligations as provided herein.

Executive Education

Customised Executive Programs

Our Partnership Approach

When we partner with your organisation to co- create tailored learning journeys, we look deep to understand your executives' learning needs and your organisation's values and goals. We seek to empower your executives with top academic research integrated with real world experiences relevant to your organisation's business environment. Bringing flexible approaches to our co-creation process, we focus on closing the "knowing-doing" gap and enabling your executives to apply learnings the next day to contribute sustainable impact to your organisation. We also support organisational development by linking individual executive growth to organisational capabilities expansion with tangible business outcomes materialising at the end of the learning journeys.



Our Understanding of WIF-NUS Placing a Bet on the Future: Exploring Exponential Technologies Program

The Women Initiative Foundation's Intent

The Women Initiative Foundation (WIF) would like to continue the partnership with NUS Executive Education to conduct a WIF-NUS Placing a Bet on the Future: Exploring Exponential Technologies Program.

This Program will be part of a series for large international companies inside the WIF Global Network, aimed to equip and support women leaders and entrepreneurs in:

- *Attaining New Mindset to Succeed in the VUCAH world*
- *Achieving Exponential Thinking to Navigate Disruptions from Deep Technologies in Industry 4.0*
- *Creating Values from the Deep Technology Disruptions During and Post-Covid*
- *Equipping Their Organisations/Entrepreneurships with Organisational Readiness in the Asian Context*
- *Learning the Different Methods to Pitch Their Innovation Stories to the Enterprise*

The Program offers rich & diverse extremely-well researched perspectives, taking into account the unique Asian Business Environment and Cultures in the Covid and Post-Covid Disrupted Business World.

Target Audience

- 75 Leaders and Entrepreneurs from WIF's Partners & Stakeholders

Estimated Program Launch

2022

Length of Program

10 Hours

Mode of Delivery

Online Via Microsoft Teams



Virginia CHA

**Adjunct Professor,
Management &
Organisation**

NUS Business School

Professor Virginia CHA is a leading educator of Innovation & Entrepreneurship in Singapore with multiple appointments at Singapore's leading tertiary education institutions: Adjunct Professor at NUS Business School and INSEAD; Adjunct appointments at SMART (Singapore MIT Alliance for Research and Technology) and Lean LaunchPad @Singapore. At NUS, she teaches the MBA module on Entrepreneurship and Innovation, in addition to the EMBA module on Managing Change and Disruption. She has conducted numerous executive programs, with special original content on Entrepreneurial Mindset with emphasis on action-planning for Corporate Innovation Programs. Her research work in entrepreneurial logic has been published as a chapter in "The Entrepreneurial Behaviour. Unveiling the cognitive and emotional aspect of entrepreneurship", published by Emerald.

In her multi-faceted 40 year-long industry and academic career which spanned multiple countries, Virginia co-founded or was the sole-founder and CEO of multiple venture-funded, hi-tech companies in Singapore and China, with listings on NASDAQ and HKSE. She's co-authored a book "Asia's Entrepreneurs: Dilemmas, Risks and Opportunities" which captured Singapore's technology entrepreneurial history from 1995-2005. Additionally, Virginia is a member of the Future Council of World Economic Forum. In addition to teaching entrepreneurship, Virginia is also an active researcher, mentor, and angel investor in Singapore's entrepreneur ecosystem. Virginia has 16 companies in her angel investment portfolio, supporting start-up entrepreneurs with operations in Singapore, Vietnam, Indonesia, USA, Finland, and the UK.

Virginia's latest research into innovation is on the subject of restorative innovation (www.restorativeinnovation.com) This emergent framework uses an economic model on how sustainable goods can reach mass consumption through innovation along three dimensions: increased supply, supply chain efficiency, and increased adoption. This framework is now taught in leading Singapore tertiary institutions.

Virginia earned her Bachelor of Science in Information Computer Science, University of Hawaii, in 1980, and her PhD from National University of Singapore. She has lived in Hong Kong, Thailand, multiple cities in the U.S. and P.R.C., and continues to be based in Singapore.